

# Abbexa's Top 100 Products

(100 best-selling products in 2021)

## ELISA KITS

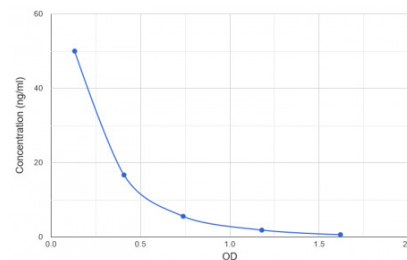
1

### Mouse D-Dimer ELISA Kit

abx258705

Range: 0.617 ng/ml - 50 ng/ml  
Sensitivity: < 0.25 ng/ml

*Quantitative  
Competitive*



**PublMed**  
(1) ★★★★★

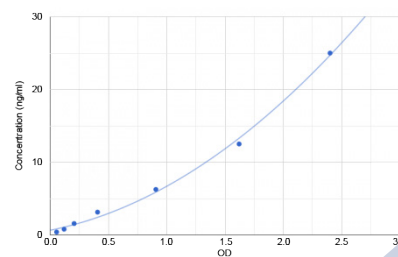
2

### SARS-CoV-2 Spike Protein S1 RBD ELISA Kit

abx365031

Range: 0.39 ng/ml - 25 ng/ml  
Sensitivity: 0.09 ng/ml

*Quantitative  
Sandwich*



(0) ★★★★★

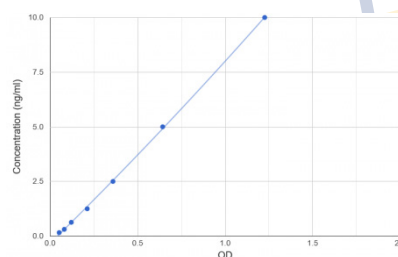
3

### Human Asprosin ELISA Kit

abx257694

Range: 0.156 ng/ml - 10 ng/ml  
Sensitivity: < 0.06 ng/ml

*Quantitative  
Sandwich*



**PublMed**  
(11) ★★★★★

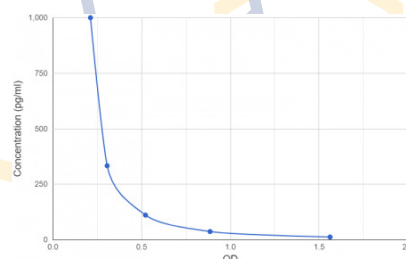
4

### Liraglutide (LRT) ELISA Kit

abx258928

Range: 12.35 pg/ml - 1000 pg/ml  
Sensitivity: < 4.64 pg/ml

*Quantitative  
Competitive*



(0) ★★★★★

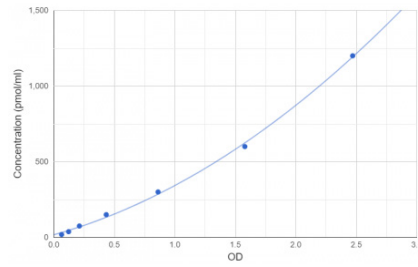
5

## Human Glycated Albumin (GA) ELISA Kit

abx252493

Range: 18.75 pmol/ml - 1200 pmol/ml  
Sensitivity: 11.25 pmol/ml

*Quantitative Sandwich*



PubMed  
(1) ★★★★★

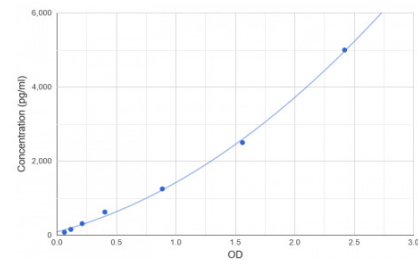
6

## Mouse Heparanase (HPSE) ELISA Kit

abx254800

Range: 78 pg/ml - 5000 pg/ml  
Sensitivity: 46.9 pg/ml

*Quantitative Sandwich*



(0) ★★★★★

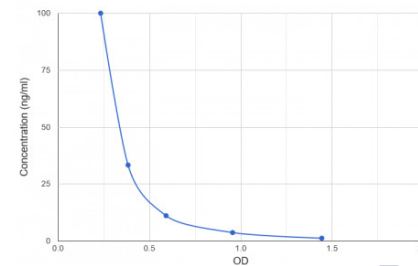
7

## Peptidoglycan (Murein) ELISA Kit

abx585338

Range: 1.23 ng/ml - 100 ng/ml  
Sensitivity: < 0.5 ng/ml

*Quantitative Competitive*



(0) ★★★★★

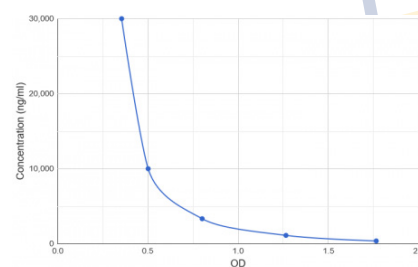
8

## Bovine Serum Albumin (BSA) ELISA Kit

abx150325

Range: 370.4 ng/ml - 30000 ng/ml  
Sensitivity: < 161.2 ng/ml

*Quantitative Competitive*



(0) ★★★★★

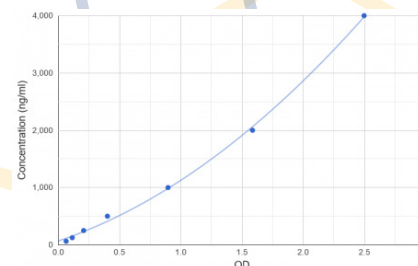
9

## Monkey D-Dimer ELISA Kit

abx353336

Range: 62.5 ng/ml - 4000 ng/ml  
Sensitivity: 37.5 ng/ml

*Quantitative Sandwich*



(0) ★★★★★

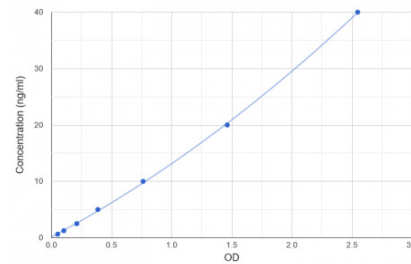
10

## Human SMPDL3B ELISA Kit

abx585223

Range: 0.625 ng/ml - 40 ng/ml  
Sensitivity: < 0.25 ng/ml

*Quantitative  
Sandwich*



(0) ★★★★★

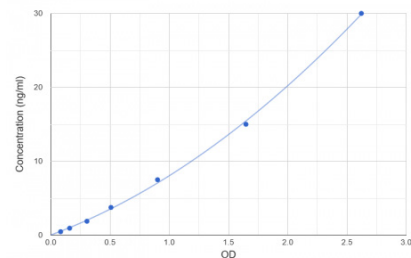
11

## Human HRG ELISA Kit

abx151844

Range: 0.47 ng/ml - 30 ng/ml  
Sensitivity: < 0.22 ng/ml

*Quantitative  
Sandwich*



(0) ★★★★★

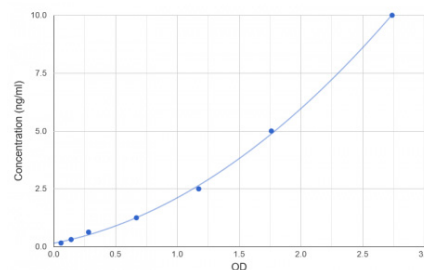
12

## Human Erythroferrone (ERFE) ELISA Kit

abx258690

Range: 0.156 ng/ml - 10 ng/ml  
Sensitivity: < 0.07 ng/ml

*Quantitative  
Sandwich*



(0) ★★★★★

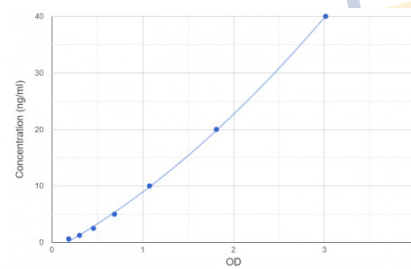
13

## Human PIINP ELISA Kit

abx152740

Range: 0.625 ng/ml - 40 ng/ml  
Sensitivity: < 0.25 ng/ml

*Quantitative  
Sandwich*



(0) ★★★★★

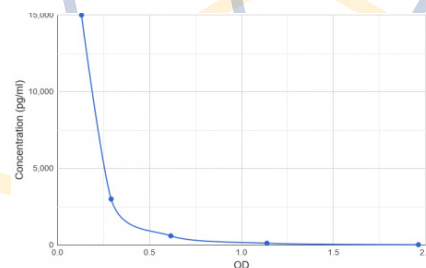
14

## Rat TSH ELISA Kit

abx156194

Range: 24 pg/ml - 15000 pg/ml  
Sensitivity: < 9 pg/ml

*Quantitative  
Competitive*



(0) ★★★★★

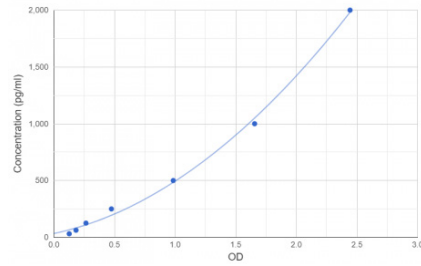
15

## Chicken TNFA ELISA Kit

abx351118

Range: 31.2 pg/ml - 2000 pg/ml  
Sensitivity: 18.8 pg/ml

*Quantitative  
Sandwich*



(0) ★★★★★

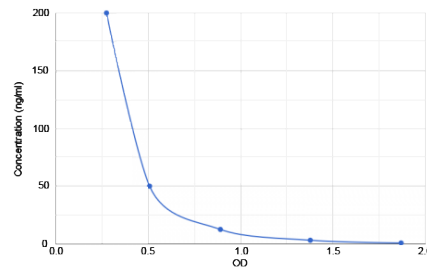
16

## Spermidine (SMD) ELISA Kit

abx585001

Range: 0.78 ng/ml - 200 ng/ml  
Sensitivity: < 0.29 ng/ml

*Quantitative  
Competitive*



  
(2) ★★★★★

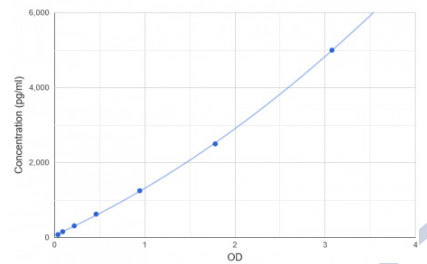
17

## Human P-Selectin (SELP) ELISA Kit

abx050186

Range: 78 pg/ml - 5000 pg/ml  
Sensitivity: < 31 pg/ml

*Quantitative  
Sandwich*



(0) ★★★★★

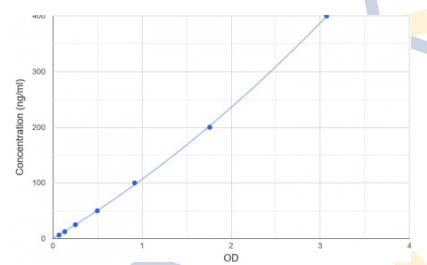
18

## Pig P-Selectin (SELP) ELISA Kit

abx052766

Range: 6.25 ng/ml - 400 ng/ml  
Sensitivity: < 2.73 ng/ml

*Quantitative  
Sandwich*



(0) ★★★★★

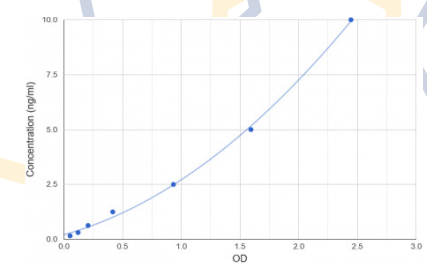
19

## Mouse Insulin Autoantibody (IAA) ELISA Kit

abx053161

Range: 0.156 ng/ml - 10 ng/ml  
Sensitivity: 0.1 ng/ml

*Quantitative  
Indirect*



  
(1) ★★★★★

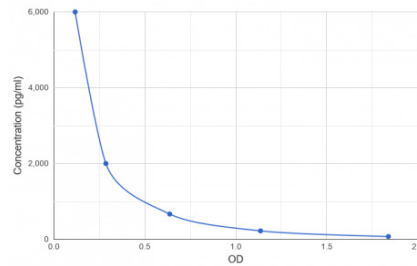
20

## 8-OHdG ELISA Kit

abx150312

Range: 74.1 pg/ml - 6000 pg/ml  
Sensitivity: < 26.9 pg/ml

*Quantitative  
Competitive*



(0) ★★★★★

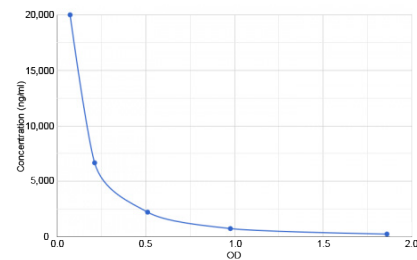
21

## Bovine Serum Albumin (BSA) ELISA Kit

abx150326

Range: 246.9 ng/ml - 20000 ng/ml  
Sensitivity: < 87.2 ng/ml

*Quantitative  
Competitive*



(0) ★★★★★

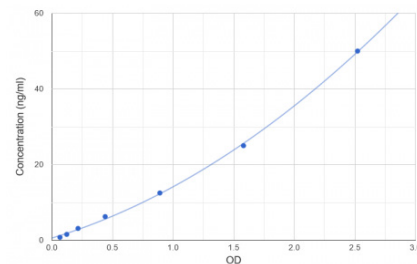
22

## Human Zonulin (HP) ELISA Kit

abx151842

Range: 0.78 ng/ml - 50 ng/ml  
Sensitivity: 0.47 ng/ml

*Quantitative  
Sandwich*



(0) ★★★★★

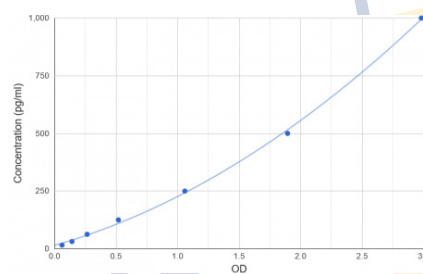
23

## Human NEFL ELISA Kit

abx152468

Range: 15.6 pg/ml - 1000 pg/ml  
Sensitivity: < 5.7 pg/ml

*Quantitative  
Sandwich*



PubMed  
(2) ★★★★★

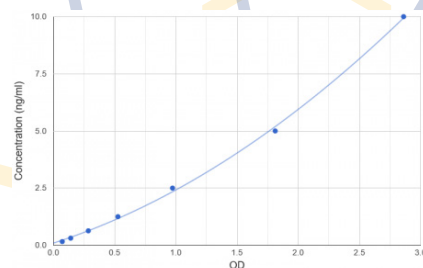
24

## Human S100A10 ELISA Kit

abx152996

Range: 0.156 ng/ml - 10 ng/ml  
Sensitivity: < 0.06 ng/ml

*Quantitative  
Sandwich*



PubMed  
(3) ★★★★★

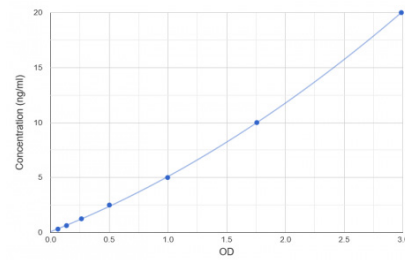
25

## Human UBE3A ELISA Kit

abx153424

Range: 0.312 ng/ml - 20 ng/ml  
Sensitivity: < 0.12 ng/ml

*Quantitative  
Sandwich*



(0) ★★★★★

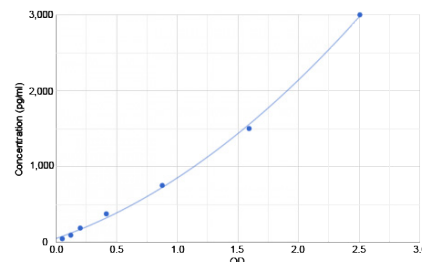
26

## Human Prothrombin (F1+2) ELISA Kit

abx252419

Range: 46.88 pg/ml - 3000 pg/ml  
Sensitivity: 28.13 pg/ml

*Quantitative  
Sandwich*



PubMed  
(2) ★★★★★

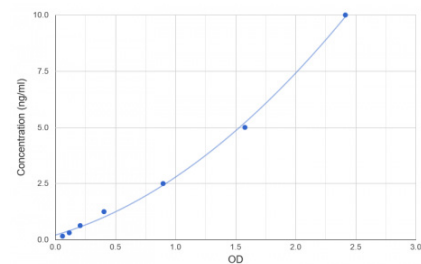
27

## Human RAC1 ELISA Kit

abx253084

Range: 0.156 ng/ml - 10 ng/ml  
Sensitivity: 0.1 ng/ml

*Quantitative  
Sandwich*



(0) ★★★★★

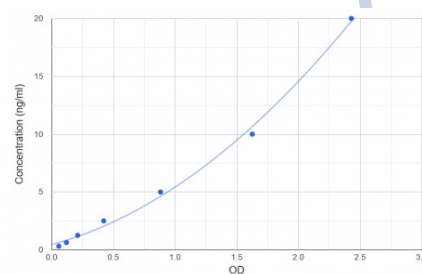
28

## Mouse (HEXA) ELISA Kit

abx254518

Range: 0.312 ng/ml - 20 ng/ml  
Sensitivity: 0.19 ng/ml

*Quantitative  
Sandwich*



(0) ★★★★★

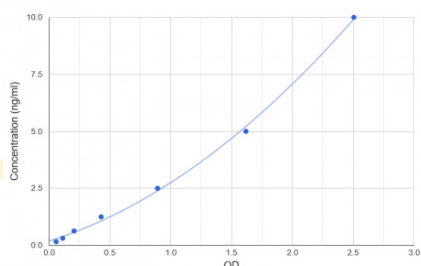
29

## Pig HAVCR1 ELISA Kit

abx255516

Range: 0.156 ng/ml - 10 ng/ml  
Sensitivity: 0.1 ng/ml

*Quantitative  
Sandwich*



(0) ★★★★★

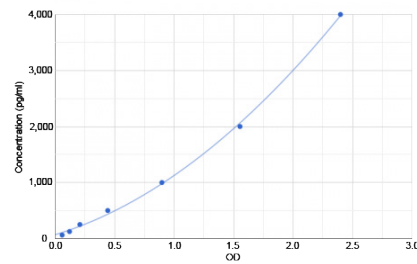
30

## Rat BAFF (TNFSF13B) ELISA Kit

abx256727

Range: 62.5 pg/ml - 4000 pg/ml  
Sensitivity: 37.5 pg/ml

*Quantitative  
Sandwich*



(0) ★★★★★

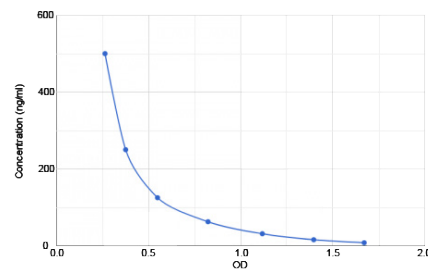
31

## Rat D-Dimer ELISA Kit

abx256862

Range: 7.81 ng/ml - 500 ng/ml  
Sensitivity: 4.69 ng/ml

*Quantitative  
Competitive*



(0) ★★★★★

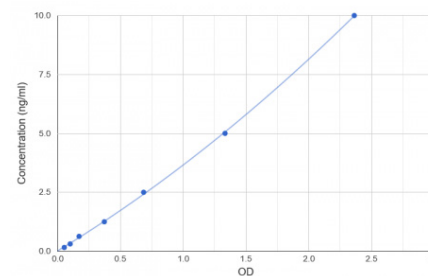
32

## Human SIK2 ELISA Kit

abx258144

Range: 0.156 ng/ml - 10 ng/ml  
Sensitivity: < 0.07 ng/ml

*Quantitative  
Sandwich*



(0) ★★★★★

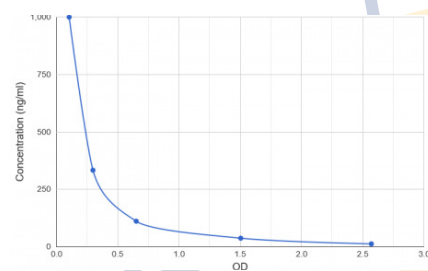
33

## Heparin (Hep) ELISA Kit

abx258893

Range: 12.35 ng/ml - 1000 ng/ml  
Sensitivity: < 4.33 ng/ml

*Quantitative  
Competitive*



PublMed  
(1) ★★★★★

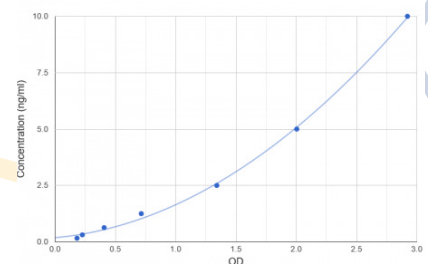
34

## Human Hyaluronidase PH-20 (SPAM1) ELISA Kit

abx383398

Range: 0.156 ng/ml - 10 ng/ml  
Sensitivity: < 0.06 ng/ml

*Quantitative  
Sandwich*



(0) ★★★★★

35

## Human Hepatitis D Virus IgG (HDV IgG) ELISA Kit

abx053050

*Qualitative  
Indirect*



(0) ★★★★★

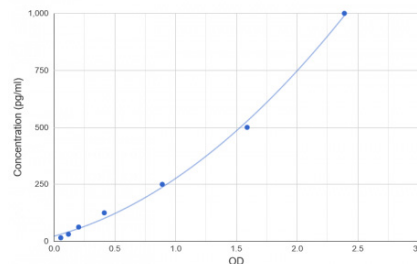
36

## Human PINP ELISA Kit

abx250337

Range: 15.6 pg/ml - 1000 pg/ml  
Sensitivity: 9.38 pg/ml

*Quantitative  
Sandwich*



PubMed  
(2) ★★★★★

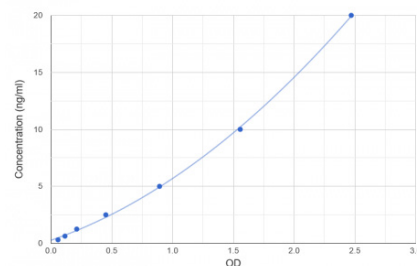
37

## Human Hepatitis B Surface Antigen (HBsAg) ELISA Kit

abx351801

Range: 0.31 ng/ml - 20 ng/ml  
Sensitivity: 0.19 ng/ml

*Quantitative  
Sandwich*



(0) ★★★★★

38

## Human HBV-PreS2 Antigen ELISA Kit

abx364968

*Qualitative  
Sandwich*



(0) ★★★★★

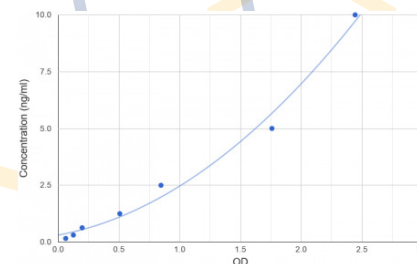
39

## Human ADAMTS5 ELISA Kit

abx572602

Range: 0.16 ng/ml - 10 ng/ml  
Sensitivity: 0.09 ng/ml

*Quantitative  
Sandwich*



PubMed  
(1) ★★★★★



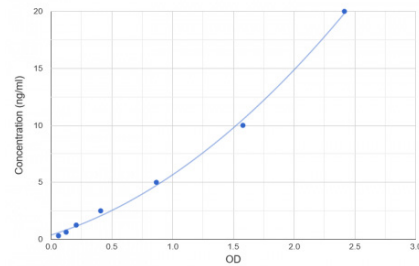
40

## Human Semaphorin 4D (SEMA4D) ELISA Kit

abx251537

Range: 0.312 ng/ml - 20 ng/ml  
Sensitivity: 0.19 ng/ml

*Quantitative Sandwich*



(0) ★★★★★

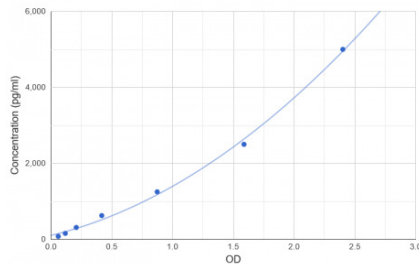
41

## Human Multimerin 1 (MMRN1) ELISA Kit

abx252769

Range: 78 pg/ml - 5000 pg/ml  
Sensitivity: 46.9 pg/ml

*Quantitative Sandwich*



(0) ★★★★★

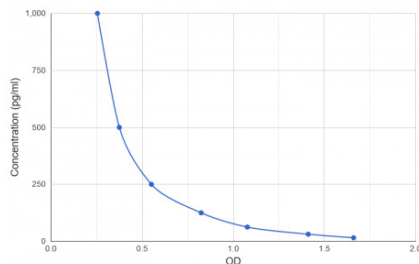
42

## Melatonin (MT) ELISA Kit

abx252779

Range: 15.6 pg/ml - 1000 pg/ml  
Sensitivity: 9.38 pg/ml

*Quantitative Competitive*



**PubMed**  
(1) ★★★★★

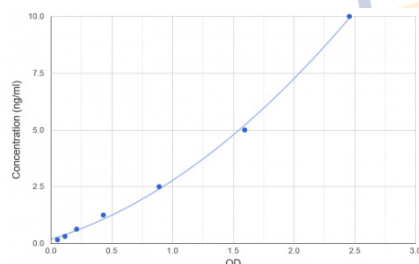
43

## Human Prosaposin (PSAP) ELISA Kit

abx253060

Range: 0.156 ng/ml - 10 ng/ml  
Sensitivity: 0.1 ng/ml

*Quantitative Sandwich*



(0) ★★★★★

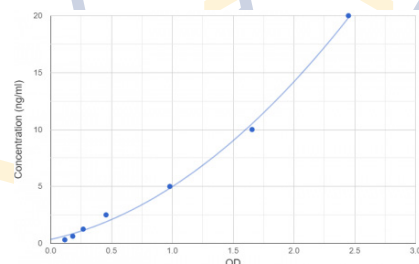
44

## Human Sirtuin 1 (SIRT1) ELISA Kit

abx253177

Range: 0.312 ng/ml - 20 ng/ml  
Sensitivity: 0.19 ng/ml

*Quantitative Sandwich*



(0) ★★★★★

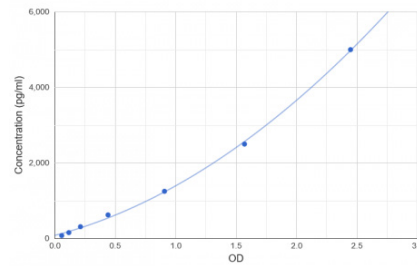
45

## Human Fibrillin 1 (FBN1) ELISA Kit

abx253928

Range: 78.13 pg/ml - 5000 pg/ml  
Sensitivity: 46.88 pg/ml

*Quantitative  
Sandwich*



(0) ★★★★★

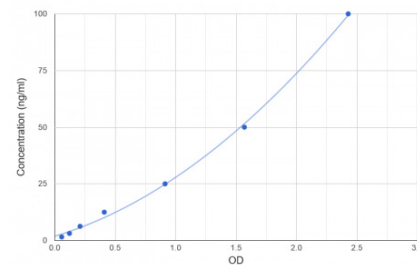
46

## Human Transferrin Receptor Protein 1 / CD71 ELISA Kit

abx351070

Range: 1.56 ng/ml - 100 ng/ml  
Sensitivity: 0.94 ng/ml

*Quantitative  
Sandwich*



(0) ★★★★★

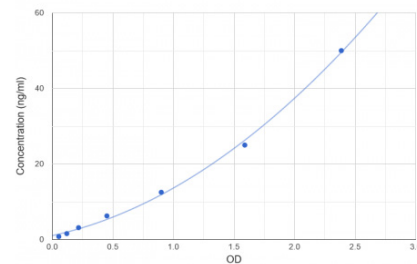
47

## Human Ataxin 2 (ATXN2) ELISA Kit

abx351338

Range: 0.78 ng/ml - 50 ng/ml  
Sensitivity: 0.47 ng/ml

*Quantitative  
Sandwich*



(0) ★★★★★

48

## Human Enterovirus 71 IgG (EV71 IgG) ELISA Kit

abx364973

*Qualitative  
Indirect*



(0) ★★★★★

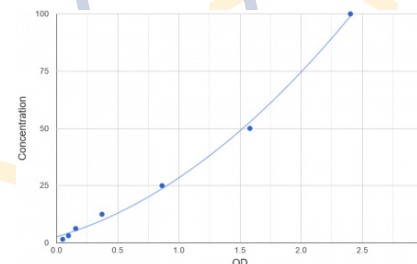
49

## Human VCAM1 ELISA Kit

abx050229

Range: 1.56 ng/ml - 100 ng/ml  
Sensitivity: 0.94 ng/ml

*Quantitative  
Sandwich*



(0) ★★★★★

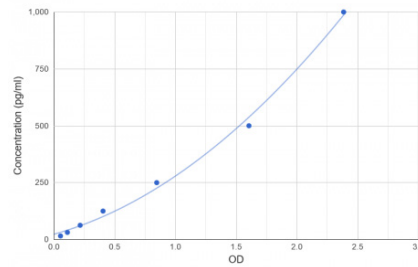
50

## Human Defensin Beta 2 (DEFB2) ELISA Kit

abx051085

Range: 15.6 pg/ml - 1000 pg/ml  
Sensitivity: 9.38 pg/ml

*Quantitative Sandwich*



(0) ★★★★★

# Abbexa's Top 100 Products

(100 best-selling products in 2021)

## ANTIBODIES

1

## Melatonin (MT) Antibody

abx100179

Reactivity:  
General (All species)

*Rabbit Polyclonal*  
Tested Applications:  
ELISA



PubMed  
(2) ★★★★★

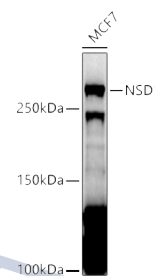
2

## NSD1 Antibody

abx135901

Reactivity:  
Human, Mouse

*Rabbit Polyclonal IgG*  
Tested Applications:  
WB



PubMed  
(1) ★★★★★

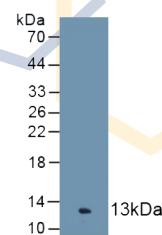
3

## Complement Component 4c (C4c) Antibody

abx102219

Reactivity:  
Human

*Rabbit Polyclonal*  
Tested Applications:  
WB, IHC, IF/ICC



(0) ★★★★★

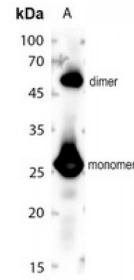
4

## SARS-CoV-2 Envelope Protein Antibody

abx226552

Reactivity:  
Virus

*Rabbit Polyclonal IgG*  
Tested Applications:  
ELISA, WB



(0) ★★★★★

5

## Coronavirus (HCoV-OC43 S) Antibody

abx109271

Reactivity:  
Virus

*Rabbit Polyclonal IgG*  
Tested Applications:  
ELISA



(0) ★★★★★

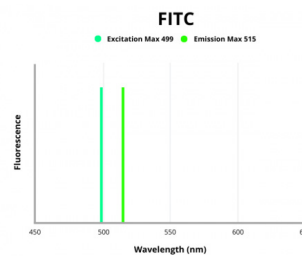
6

## Carbonic Anhydrase IV (CA4) Antibody (FITC)

abx273611

Reactivity:  
Human

*Rabbit Polyclonal IgG*  
Tested Applications:  
WB, IHC, IF/ICC



(0) ★★★★★

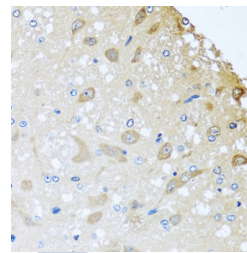
7

## Collectin Sub-Family Member 11 (COLEC11) Antibody

abx003772

Reactivity:  
Human, Rat

*Rabbit Polyclonal IgG*  
Tested Applications:  
WB, IHC



**PubMed**  
(2) ★★★★★

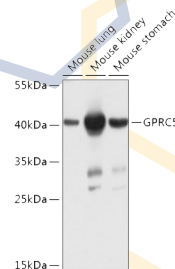
8

## GPRC5A Antibody

abx005719

Reactivity:  
Human, Mouse

*Rabbit Polyclonal IgG*  
Tested Applications:  
WB



**PubMed**  
(2) ★★★★★

9

## Sialic Acid (SA) Antibody

abx100414

Reactivity:  
General (All species)

*Rabbit Polyclonal IgG*  
Tested Applications:  
ELISA



(0) ★★★★★

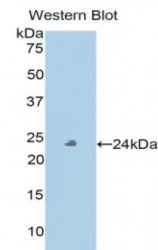
10

## Peroxidasin Homolog (PXDN) Antibody

abx101906

Reactivity:  
Human

*Rabbit Polyclonal*  
Tested Applications:  
WB, IHC, IF/ICC



(0) ★★★★★

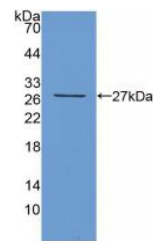
11

## T-Cell Protein (TIGIT) Antibody

abx104648

Reactivity:  
Mouse

*Rabbit Polyclonal IgG*  
Tested Applications:  
WB, IHC, IF/ICC



(0) ★★★★★

12

## Outer Membrane Protein A (ompA) Antibody

abx110631

Reactivity:  
Bacteria

*Rabbit Polyclonal IgG*  
Tested Applications:  
ELISA



PubMed  
(1) ★★★★★

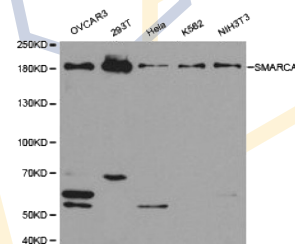
13

## SMARCA4 Antibody

abx117212

Reactivity:  
Human, Mouse, Rat

*Rabbit Polyclonal IgG*  
Tested Applications:  
ELISA, WB, IHC



(0) ★★★★★

14

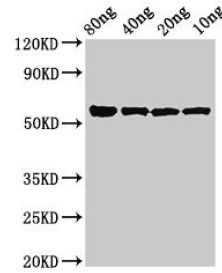
## Lys-Gingipain (kpg) Antibody

abx338983

Reactivity:  
Bacteria

*Rabbit Polyclonal IgG*

Tested Applications:  
ELISA, WB



(0) ★★★★★

15

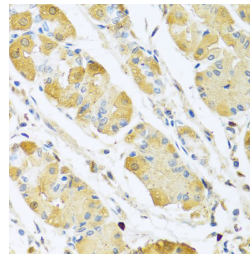
## C4b-Binding Protein Beta Chain (C4BPB) Antibody

abx004862

Reactivity:  
Human, Mouse, Rat

*Rabbit Polyclonal IgG*

Tested Applications:  
WB, IHC, IF/ICC



(0) ★★★★★

16

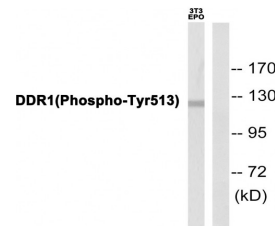
## DDR1 pY513 Antibody

abx012650

Reactivity:  
Human, Mouse, Rat

*Rabbit Polyclonal IgG*

Tested Applications:  
ELISA, WB, IHC



**PubMed**

(2) ★★★★★

17

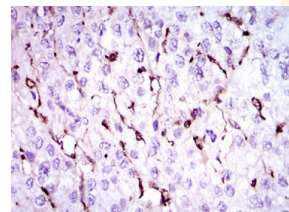
## NPC1 Antibody

abx015944

Reactivity:  
Human

*Mouse Monoclonal IgG<sub>1</sub>*

Tested Applications:  
ELISA, WB, IHC, FCM



(0) ★★★★★

18

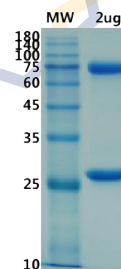
## SARS-CoV-2 Spike Glycoprotein Antibody

abx376479

Reactivity:  
Virus

*Human, Mouse Monoclonal IgM*

Tested Applications:  
ELISA, WB



(0) ★★★★★

19

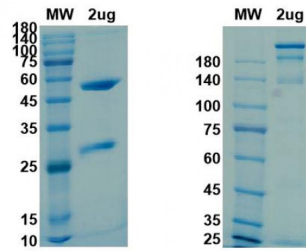
## SARS-CoV-2 Spike Glycoprotein Antibody

abx376478

*Human, Mouse Monoclonal IgG<sub>1</sub> Kappa*

Reactivity:  
Virus

Tested Applications: ELISA, WB



20

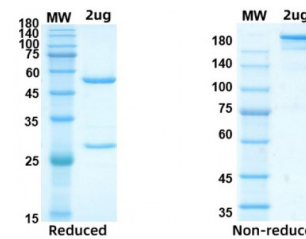
## SARS-CoV-2 Nucleocapsid Protein Antibody

abx376481

*Human, Mouse Monoclonal IgG<sub>1</sub>*

Reactivity:  
Virus

Tested Applications:  
ELISA, WB



21

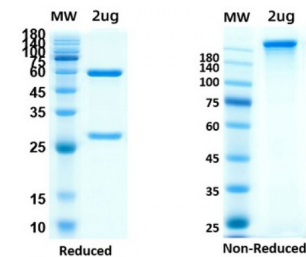
## SARS-CoV-2 Spike Protein NTD Antibody

abx376482

*Human, Mouse Monoclonal IgG*

Reactivity:  
Virus

Tested Applications:  
ELISA, WB



22

## SARS-CoV-2 Spike Protein RBD Neutralizing Antibody

abx376487

*Delta B.1.617.2 Variant Human Monoclonal IgG<sub>1</sub>*

Reactivity:  
Virus



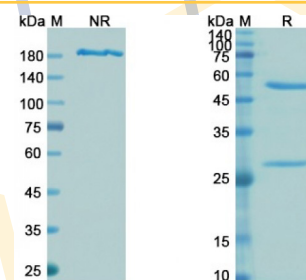
23

## SARS-CoV-2 Spike Protein RBD Neutralizing Antibody

abx376490

*Omicron B.1.1.529 Variant Human Monoclonal IgG, Kappa*

Reactivity:  
Virus



20

## Transmembrane Channel-Like Protein 7 Antibody

abx375798

Reactivity:  
Human, Mouse

*Rabbit Polyclonal*  
Tested Applications:  
ELISA, WB



(0) ★★★★★

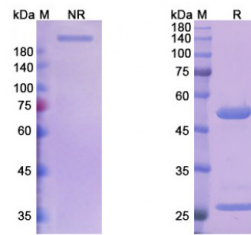
20

## SARS-CoV-2 Spike Protein Neutralizing Antibody

abx376552

Reactivity:  
Virus

(Bebtelovimab)  
*Human Monoclonal IgG, Lambda*



(0) ★★★★★

# Abbexa's Top 100 Products

(100 best-selling products in 2021)

## PROTEINS AND PEPTIDES

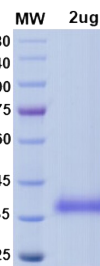
1

## SARS-CoV-2 Spike Protein RBD (Delta Variant)

abx620012

Purity: > 90% (SDS-PAGE)  
Origin: Virus

*Recombinant*



(0) ★★★★★

2

## Snailase

abx082089

Mixture of 20-30  
Enzymes

*Applications include  
hydrolysis and digestion*



(0) ★★★★★



3

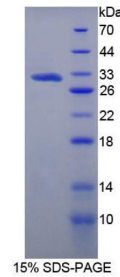
## Mouse Versican (VCAN) Protein

abx069663

*Recombinant*

Purity: > 90%

Origin: Mouse



(0) ★★★★★

4

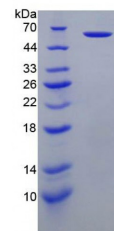
## Human Perforin 1 (PRF1) Protein (Active)

abx652309

*Recombinant*

Purity: > 95%

Origin: Human



(0) ★★★★★

5

## Human Superoxide Dismutase (SOD) Protein (Active)

abx060221

*Recombinant*

Purity: > 95%, contains < 1% Dimers (SDS-PAGE)

Origin: Human



(0) ★★★★★

6

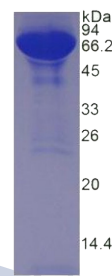
## Pig Albumin (ALB) Protein

abx065007

*Native*

Purity: > 95% (SDS-PAGE)

Origin: Pig



(0) ★★★★★

7

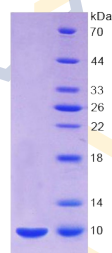
## Mouse Insulin (INS) Protein

abx067219

*Recombinant*

Purity: > 97%

Origin: Mouse



(0) ★★★★★

8

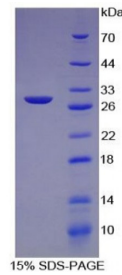
## Human Collagen Type IV Alpha 2 (COL4a2) Protein

abx066007

*Recombinant*

Purity: > 97%

Origin: Human



(0) ★★★★★

9

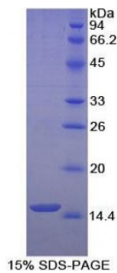
## Human Histatin 1 (HTN1) Protein

abx067111

*Recombinant*

Purity: > 95%

Origin: Human



(0) ★★★★★

10

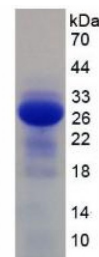
## Mouse Interleukin 2 Receptor Beta (IL2RB) Protein

abx067499

*Recombinant*

Purity: > 90%

Origin: Mouse



(0) ★★★★★

11

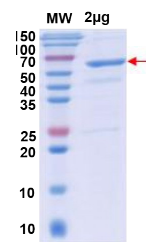
## Human Catalase (CAT) Enzyme (Active)

abx078001

*Recombinant*

Purity: > 90% (SDS-PAGE, Coomassie Blue staining)

Origin: Human



(0) ★★★★★

12

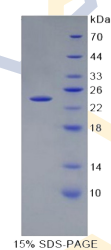
## Human PGLYRP1 Protein

abx166124

*Recombinant*

Purity: > 97%

Origin: Human



(0) ★★★★★

13

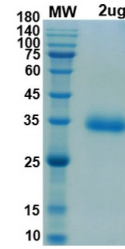
## SARS-CoV-2 Spike Protein RBD (Gamma P.1 Variant)

abx620006

Recombinant

Purity: > 90% (SDS-PAGE)

Origin: Virus



(0) ★★★★★

14

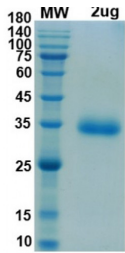
## SARS-CoV-2 Spike Protein RBD (UK B.1.1.7 Variant)

abx620010

Recombinant

Purity: > 90% (SDS-PAGE)

Origin: Virus



(0) ★★★★★

15

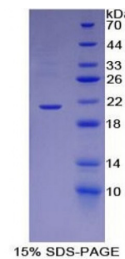
## Mouse Apolipoprotein B (APOB) Protein

abx065413

Recombinant

Purity: > 90%

Origin: Mouse



(0) ★★★★★

16

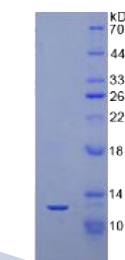
## Human NT-ProBNP Peptide

abx068337

Recombinant

Purity: > 97%

Origin: Human



(0) ★★★★★

17

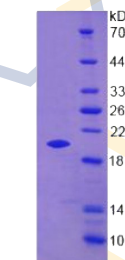
## Mouse PGLYRP1 Protein

abx068454

Recombinant

Purity: > 95%

Origin: Mouse



(0) ★★★★★

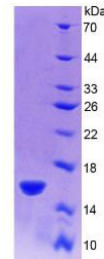
18

## Rat R-Spondin 1 (RSP01) Protein

abx068939

Recombinant

Purity: > 90%  
Origin: Rat



(0) ★★★★★

19

## SARS-CoV-2 Nucleocapsid Protein

abx163973

Recombinant

Purity: > 95% (SDS-PAGE)  
Origin: Virus



(0) ★★★★★

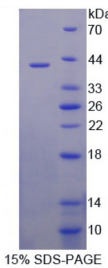
20

## Mouse SLURP1 Protein

abx166123

Recombinant

Purity: > 95%  
Origin: Mouse



(0) ★★★★★

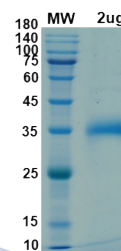
21

## SARS-CoV-2 Spike Protein RBD (Beta B.1.351 Variant)

abx620004

Recombinant

Purity: > 90% (SDS-PAGE)  
Origin: Virus



(0) ★★★★★

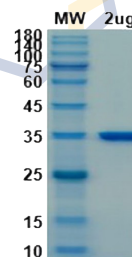
22

## SARS-CoV-2 Spike Protein RBD (Delta Plus B.1.617.2.1)

abx620018

Recombinant

Purity: > 90% (SDS-PAGE)  
Origin: Virus



(0) ★★★★★

23

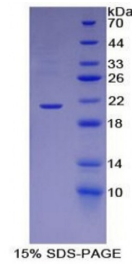
## Mouse Apolipoprotein B (APOB) Protein

abx065413

*Recombinant*

Purity: > 90%

Origin: Mouse



(0) ★★★★★

24

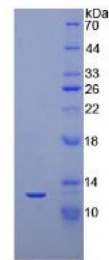
## Human NT-ProBNP Peptide

abx068337

*Recombinant*

Purity: > 97%

Origin: Human



(0) ★★★★★

25

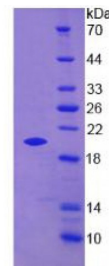
## Mouse PGLYRP1 Protein

abx068454

*Recombinant*

Purity: > 95%

Origin: Mouse



(0) ★★★★★